



BC R

Bihler Control Retrofit

Modernize your machinery

BIHLER

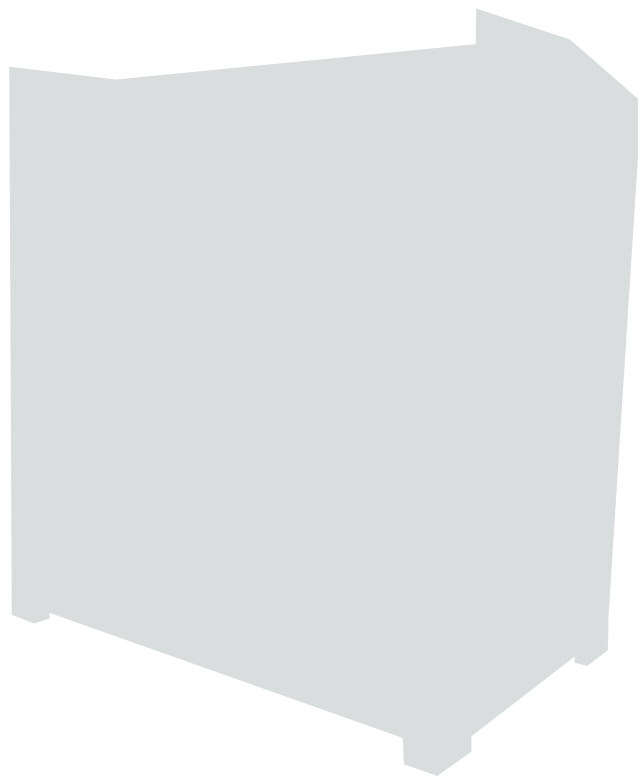
Cost-effective and fast realization

The cost-effective upgrade and retrofit package for your old machine(s) consists of our new BC R control system and new machine components. Bihler Service experts will retrofit your machine at your site and install the BC R control system. After the BC R Retrofit, your machine including the new control system will be up to date and will have full spare parts support.

Your machine meets the current safety standards and is optionally network-compatible for the digital age. Additional features such as simple and clear operation of the control system, monitoring functions, handwheel operation for precise and fine adjustment of tool movements and much more now make your machine even more productive.



BC R control system



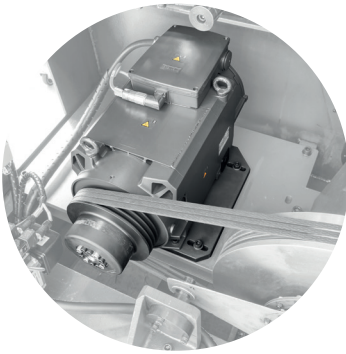
Your machine

Highlights at a glance

- Cost-effective and fast realization
- Conversion time approx. 1 week
- Conversion takes place at your site
- Customized range of functions for continuous operation
- Latest safety standards for machines and personnel
- Higher machine availability and guaranteed spare parts support

New components for your machine

To ensure you benefit from all advantages of the BC R control system, the machine must be equipped with various new features. These are included in the basic package. In addition, you can select further optional new features. Overview of the most important machine components:



New frequency-controlled drive
– continuously adjustable



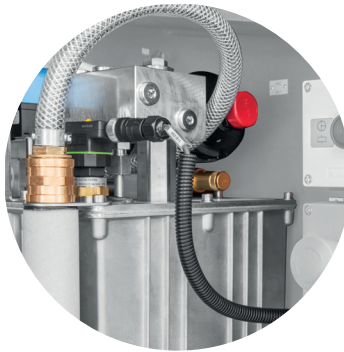
Freely programmable input and
output modules



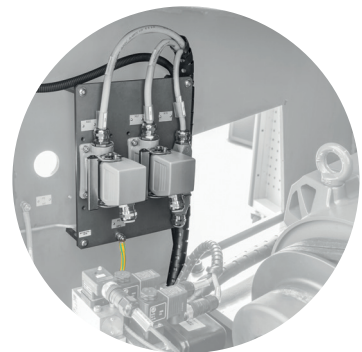
Lubrication point sensor for
monitoring bull gear lubrication



New central lubrication
(optional)



New hydraulics
(optional)



New interface(s) for connecting
peripheral devices

Three steps to machine modernization



Delivery of all
components



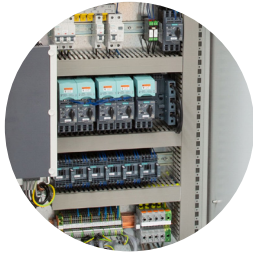
Bihler Service retrofits
the machine at your
site



Commissioning and
acceptance



Your production is
state-of-the-art again



Guaranteed spare parts supply

The BC R upgrade components as well as all control system components are state-of-the-art.



User friendliness

Intuitive operation and convenient handling with 12" touch display and simple operator menu.



Maximum safety for your machine

Lubrication point sensors and press safety valve are linked to the control functions and are monitored.



Latest safety standards

The latest safety technology (PNOZmulti) controls and monitors all machine safety functions.



Status display via signal lamp

Fast detection of up to four states (e.g. machine stop, refill requirement, etc.).
(optional)



Electronic handwheel

Allows synchronous tool movements as accurate as 0.01° for easy and precise tool setup.



Remote Service

The secure connection for communication between the machine and Bihler Service guarantees perfect support
(optional).



OPC UA Interface

Transfer of machine statuses to a MES system (e.g. parts counter, machine status, etc.) (optional).



Basic package

- Bihler Control Retrofit (BC R) process control system with 12" touch display
- Control cabinet and basic electrical equipment with 4 door switches
- Conversion kit main drive with accessories and guard plates
- Rotary encoder with mounting flange
- Two-channel press safety valve for safe control of the pneumatic clutch
- Lubrication point sensor for monitoring bull gear lubrication
- Electronic handwheel with hand terminal HT 1
- Machine and tool control system
- Standard interface for reel (400 V, emergency stop)

Options

- Modernization of central lubrication and/or pneumatics
- Hydraulic conversion kit (Maximator) (if installed)
- Clutch NEW
- Roller chain NEW (if installed)
- End-of-material shutdown
- Second lubrication circuit
- Extension 400 V for second reel or other additional unit
- Extension 230 V (socket in control cabinet and at the machine)
- Remote service
- OPC UA
- Interface for conveyor and/or industrial extractor
- Additional door switch (e.g. for maintenance flap)
- Adapter loop line
- Individual cable installation / longer cables
- Conversion to LED lighting
- Conversion set to push-button door switch (only for Bihler soundproof cabins)
- Signal lamp (double RGB with 4 states)

Available for

- RM Series: RM-30 / RM-35 / RM-40
- GRM Series: GRM-50 / GRM-80 / GRM-100
- Mach Series: Mach-1 / Mach-1/7 / Mach-05



Contact



Bastian Hartmann
Sales Customer Support
+49(0)8368/18-296
bastian.hartmann@bihler.de



Hubert Werner
Technical Sales
+49(0)8368/18-366
hubert.werner@bihler.de

Otto Bihler Maschinenfabrik GmbH & Co. KG
Lechbrucker Str. 15
87642 Halblech
GERMANY
+49(0)8368/18-0
aftersales@bihler.de
www.bihler.de